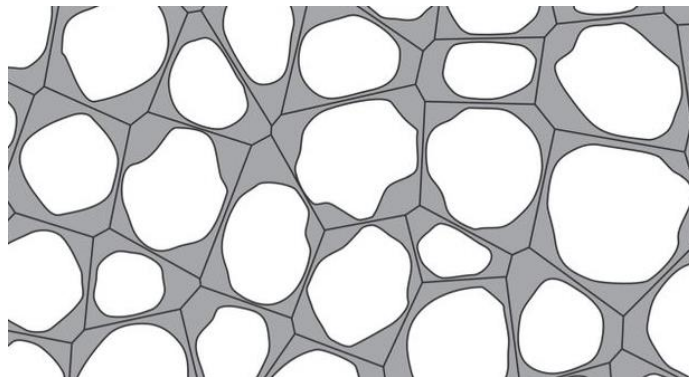
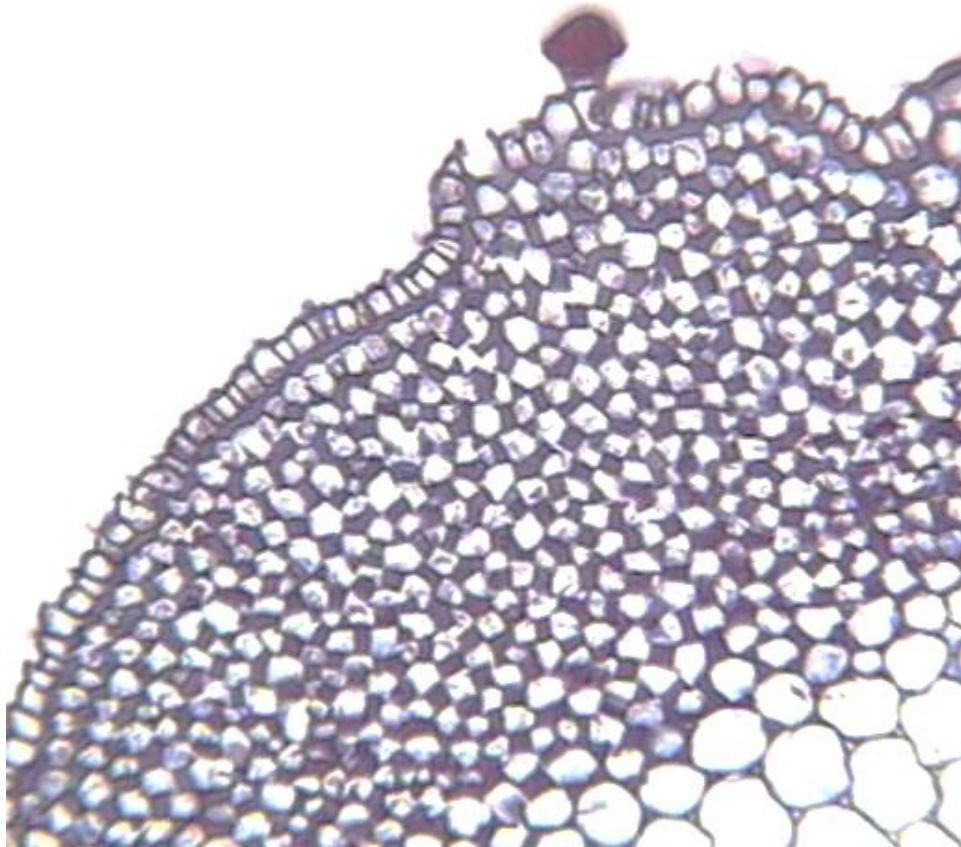
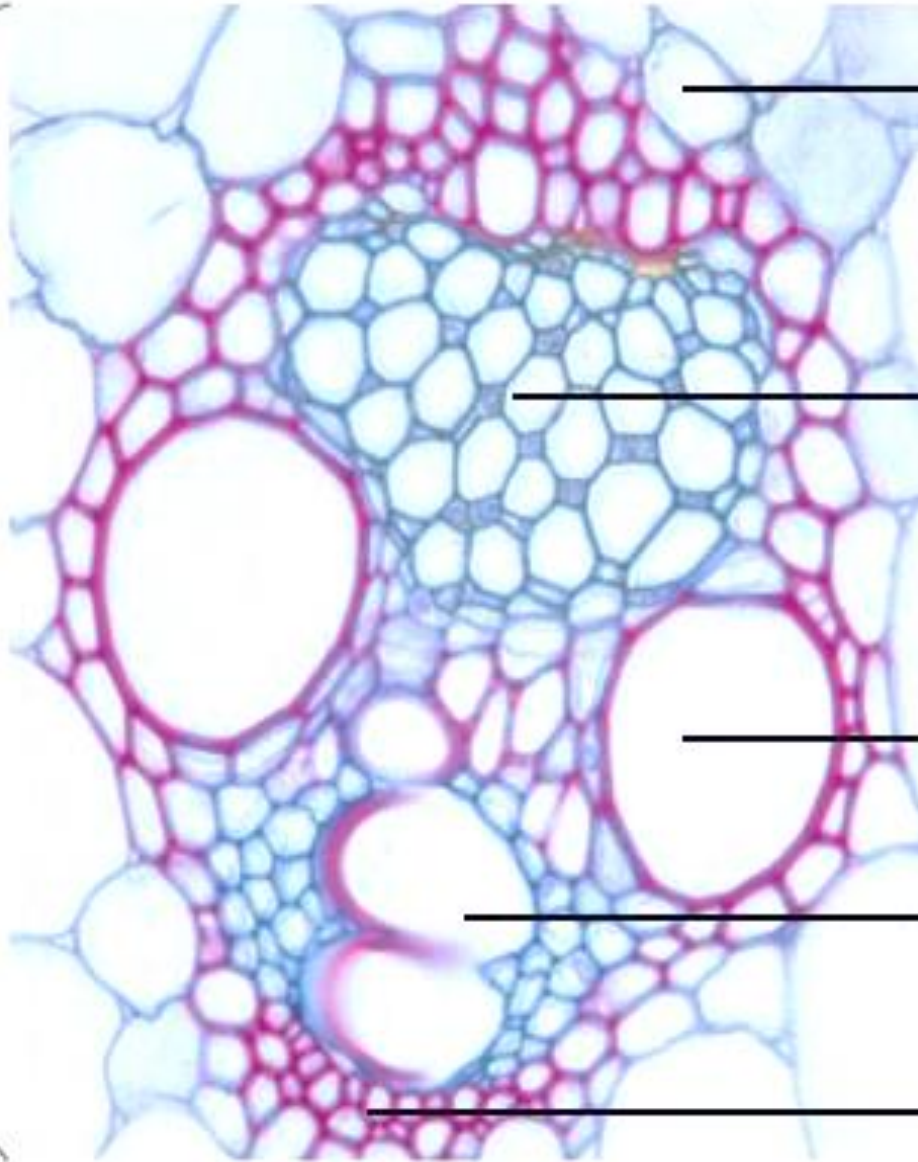


MEHANIČKA I PROVODNA TKIVA

Uglasti kolehnim – stablo mrtve koprive (*Lamium* sp.)



Zatvoreni kolateralni provodni snopić (stablo kukuruza *Zea mays*)



Otvoreni kolateralni provodni snopić (stablo ljutića – *Ranunculus* sp.)

